

COMPANY PROFILE

2014

Assured Protection Vista



APV

WWW.APV-GROUP.NET



APV for cables Management Systems was launched in 1998 in city of Damascus - Syria where Cables Management Systems manufactured with all fittings and from accessories to various supporting systems by all shapes and sizes which meets whole demands of regional and international markets, in addition to the capability of manufacturing other sizes per request by hands of well trained and qualified experts within a team at heart of Middle East in Arab Republic of Syria.

APV got a leading position in Syrian economy by gaining the rank 28 in biggest investment projects in Syria.



APV company is committed to highest and most precise global standards committing with (CE Mark) requirements where our production classified under commodities relevant to low voltage and construction materials.



Heavy Cable Ladder (HCL)
شهادة اعتماد
حوامل كابلات سلمي ثقيل



Medium Cable Ladder (MCL)
شهادة اعتماد
حوامل كابلات سلمي وسط



Light Cable Ladder (LCL)
شهادة اعتماد
حوامل كابلات سلمي خفيف



EN ISO 9001 : 2008
شهادة اعتماد
(كافة منتجات الشركة)



Cable Ladder Cover (CLC)
شهادة اعتماد
حوامل كابلات (غطاء سلمي)



EN ISO 9001 : 2000
شهادة اعتماد
(كافة منتجات الشركة)



Perforated Cable Tray (PCT)
شهادة اعتماد
حوامل كابلات (كيبيل تري منقّب)



Solid Cable Tray "Trunking" (SCT)
شهادة اعتماد
حوامل كابلات (كيبيل تري مغلقة)



Cable Tray Cover (CTC)
شهادة اعتماد
حوامل كابلات (غطاء كيبيل تري)



Heavy Cable Ladder (HCL)
شهادة اعتماد
حوامل كابلات سلمي ثقيل



Medium Cable Ladder (MCL)
شهادة اعتماد
حوامل كابلات سلمي وسط



Light Cable Ladder (LCL)
شهادة اعتماد
حوامل كابلات سلمي خفيف



KEMA
شهادة اختبار الغلظة
(الاقنية المتقبة)



Certificate Credence Cable Tray
شهادة اعتماد (كيبيل تري)



KEMA
شهادة اختبار الغلظة
(الاقنية المتقبة)



Perforated Cable Tray (PCT)
شهادة اعتماد
حوامل كابلات (كيبيل تري متقبة)



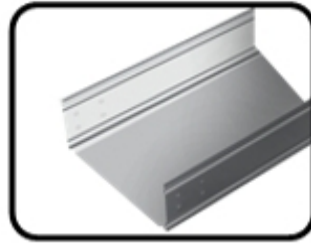
Un Perforated Cable Tray
شهادة اعتماد حوامل كابلات



Cable Tray Cover (CTC)
شهادة اعتماد
حوامل كابلات (غطاء كيبيل تري)



PERFORATED CABLE TRAY
قناة مثقبة



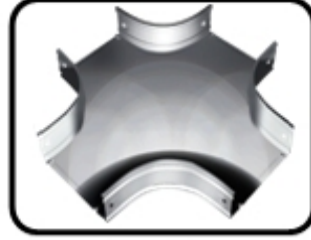
SOLID CABLE TRAY
قناة مسطحة



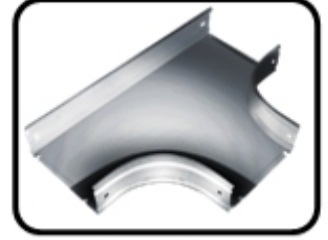
HEIGHT REDUCER
نقاصة ارتفاع



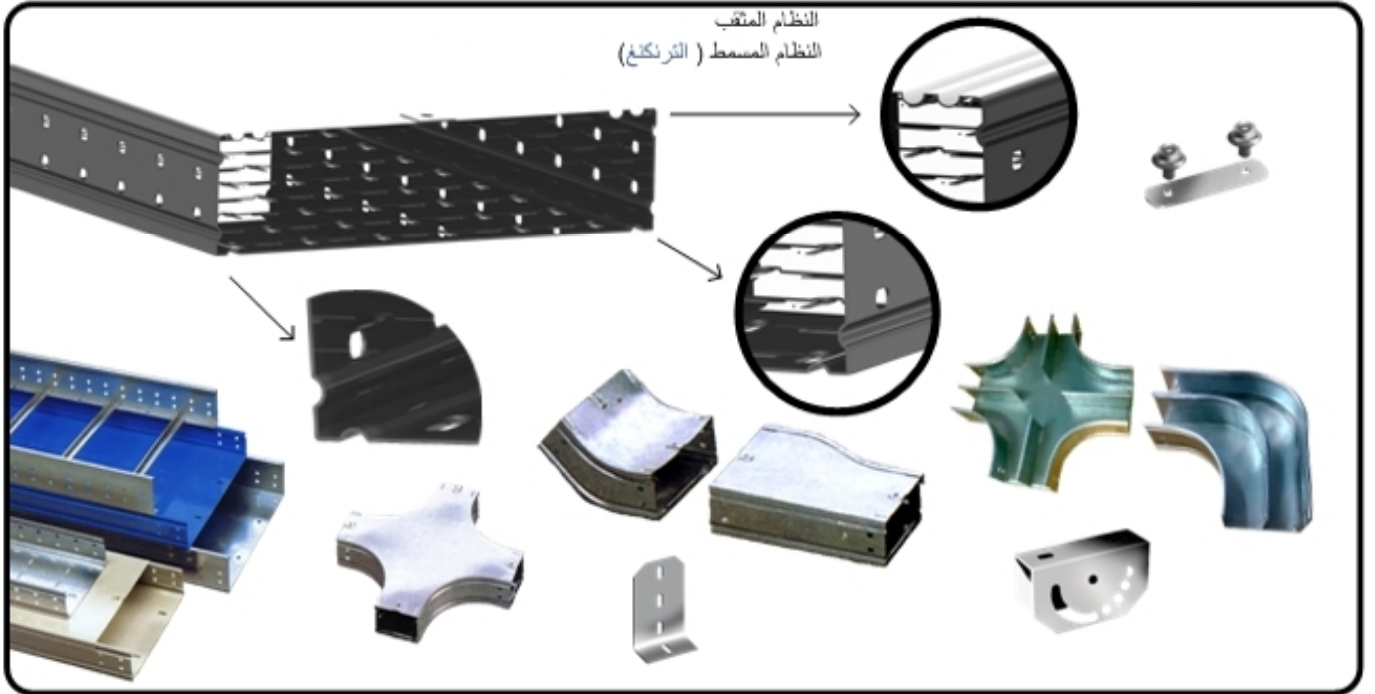
HALF EQUAL TEE
نصف تيه مسطحة



CROSSPIECE
مصلية



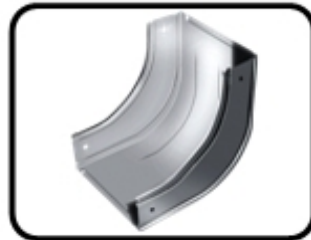
EQUAL TEE
تي مسطحة



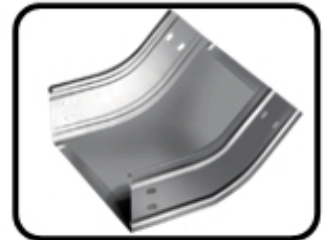
متوفرة بثلاثة ارتفاعات وهي 035 و 050 و 075 و 100 ملم و بعرض 050 و 100 و 150 و 200 و 300 و 400 و 500 و 600 و 700 و 800 و 900 ملم. لكل ارتفاع



90 OUTSIDE RISER
كوع نزول 90



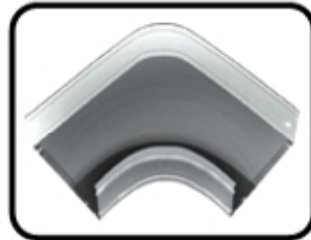
90 INSIDE RISER
كوع صعود 90



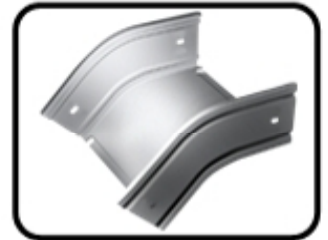
45 INSIDE RISER
كوع صعود 45



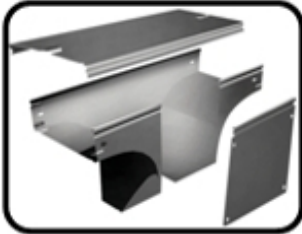
45 FLAT BEND
كوع مسطح 45



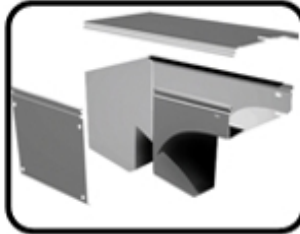
90 FLAT BEND
كوع مسطح 90



45 OUTSIDE RISER
كوع نزول 45



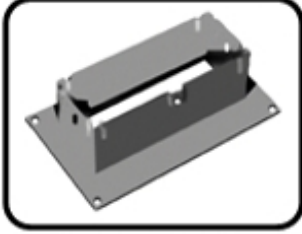
VERTICAL DOWNWARD
SKEWED TEE WITH 2
COVERS
تي عمودية نزول مفتولة بغطائين



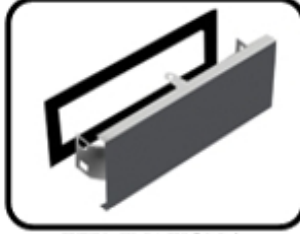
RIGHT DOWNWARD 90°
SKEWED
BEND WITH 2
COVERS
كوع نزول مفتولة يمينا بغطائين



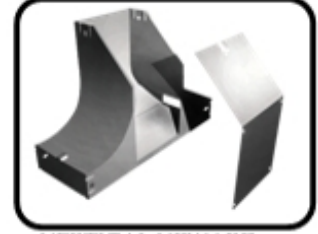
VERTICAL TEE WITH 1
COVER
تي عمودية بغطاء واحد



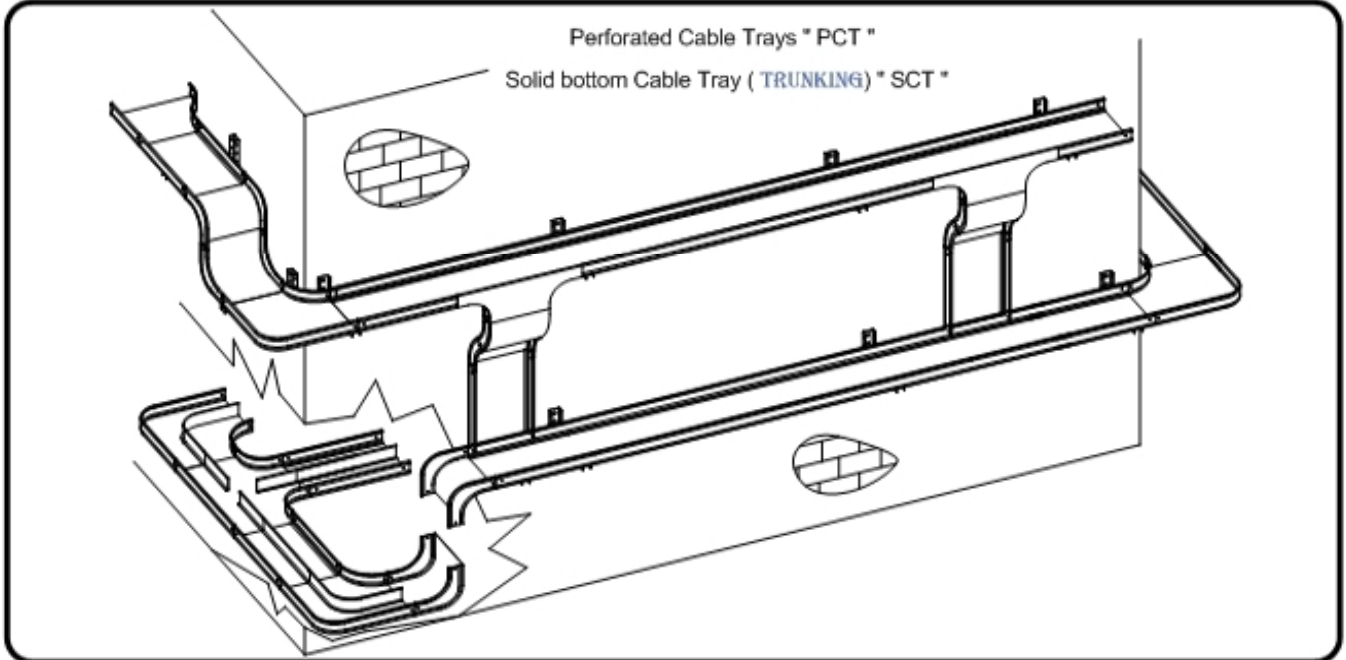
ELECTRICAL BOARD
CONNECTOR
مخرج / مدخل تابلو



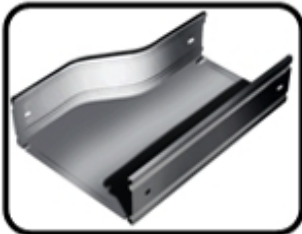
TERMINATION &
REDUCING CONNECTOR
شريحة سد وتقليص



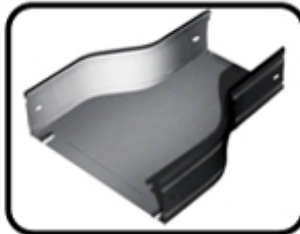
VERTICAL UPWARD
SKEWED TEE WITH 1
COVER
تي عمودية صعود مفتولة بغطاء واحد



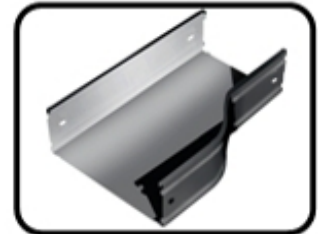
These two Systems are available in three different heights 035,050,075,100 mm with widths 050 ,075 , 150 ,200 ,300 ,400 ,500 ,600 ,700 ,800 ,900 mm for each height.



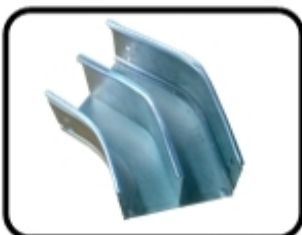
LEFT REDUCER
نقاصة يسار



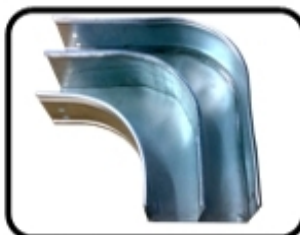
REDUCER
نقاصة



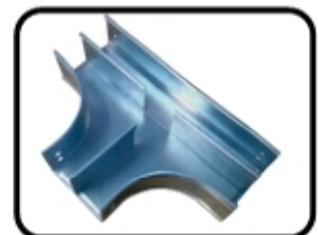
RIGHT REDUCER
نقاصة يمينا



FLAT BEND 45° WITH
BARRIER STRIP (Trunking)
كوع مسطح 45° مع فواصل (ترانكنغ)



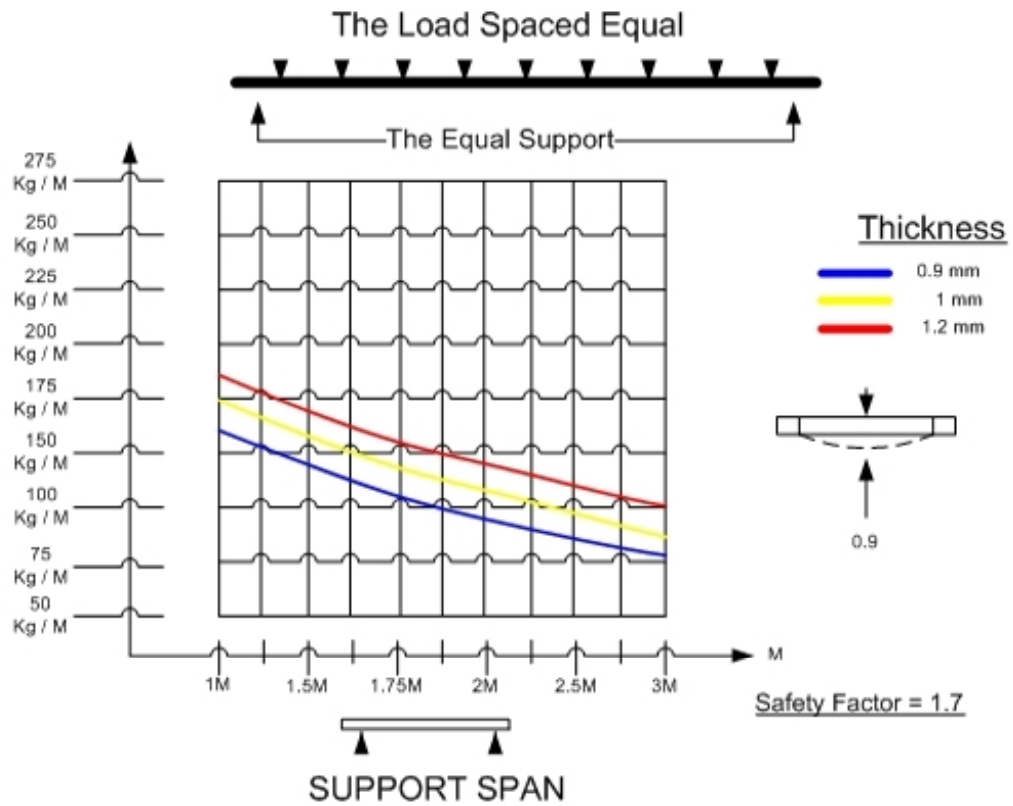
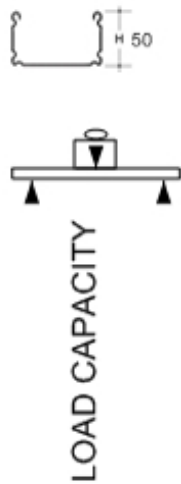
FLAT BEND 90° WITH
BARRIER STRIP (Trunking)
كوع مسطح 90° مع فواصل (ترانكنغ)



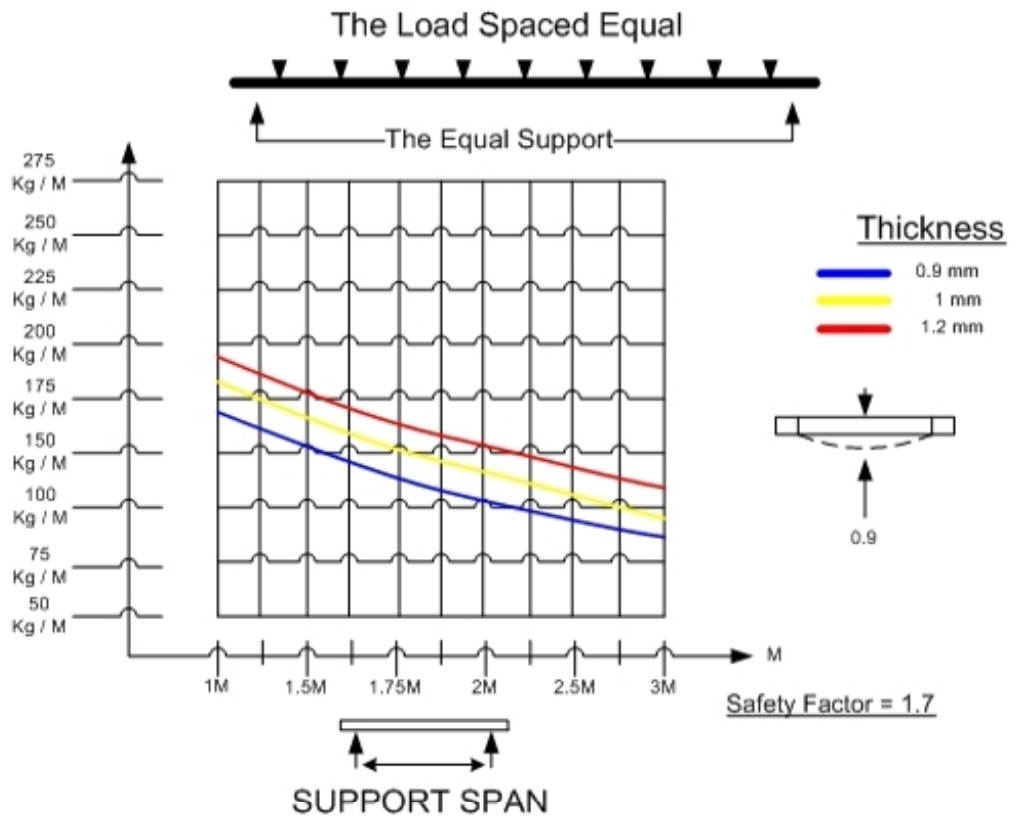
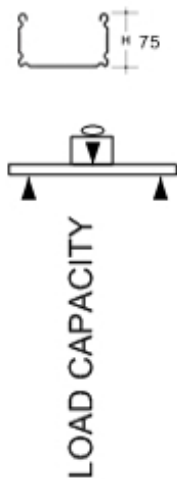
EQUAL TEE WITH
BARRIER STRIP
تي مسطحة مع فواصل (ترانكنغ)

LOADING GRAPHS

Strengthened CABLE TRAYS

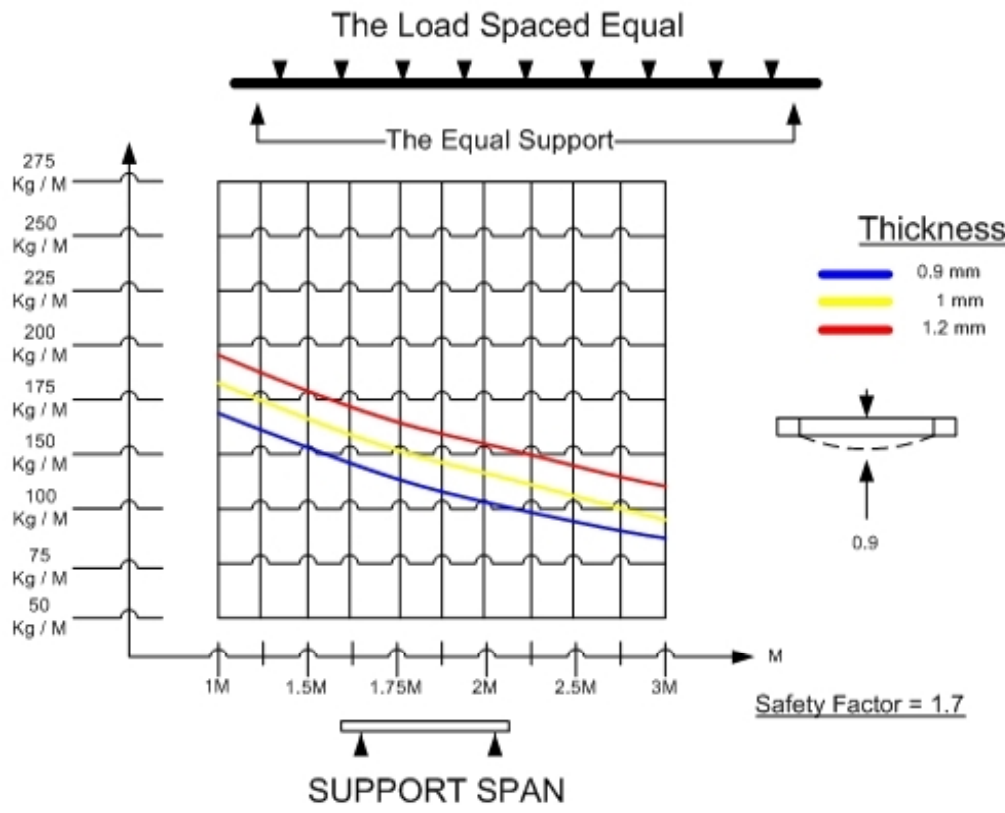


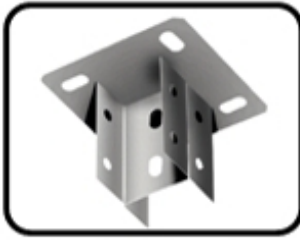
Strengthened CABLE TRAYS



LOADING GRAPHS

**Strengthened
CABLE TRAYS**





CEILING MOUNTING
DOUBLE BASE
قاعدة تثبيت سقفية مزدوجة



HEAVY WALL MOUNTING
SUPPORT
حمالة جدارية ثقيلة



SUPPORT FOR EXTENSION
WITH LIMIT ANGLE (TO)90
حمالة للمدادة مع تحديد الزاوية



BRACKET FOR STEEL BUILDING
حمالة للهنكار



FLOOR MOUNTING SUPPORT
حمالة أرضية

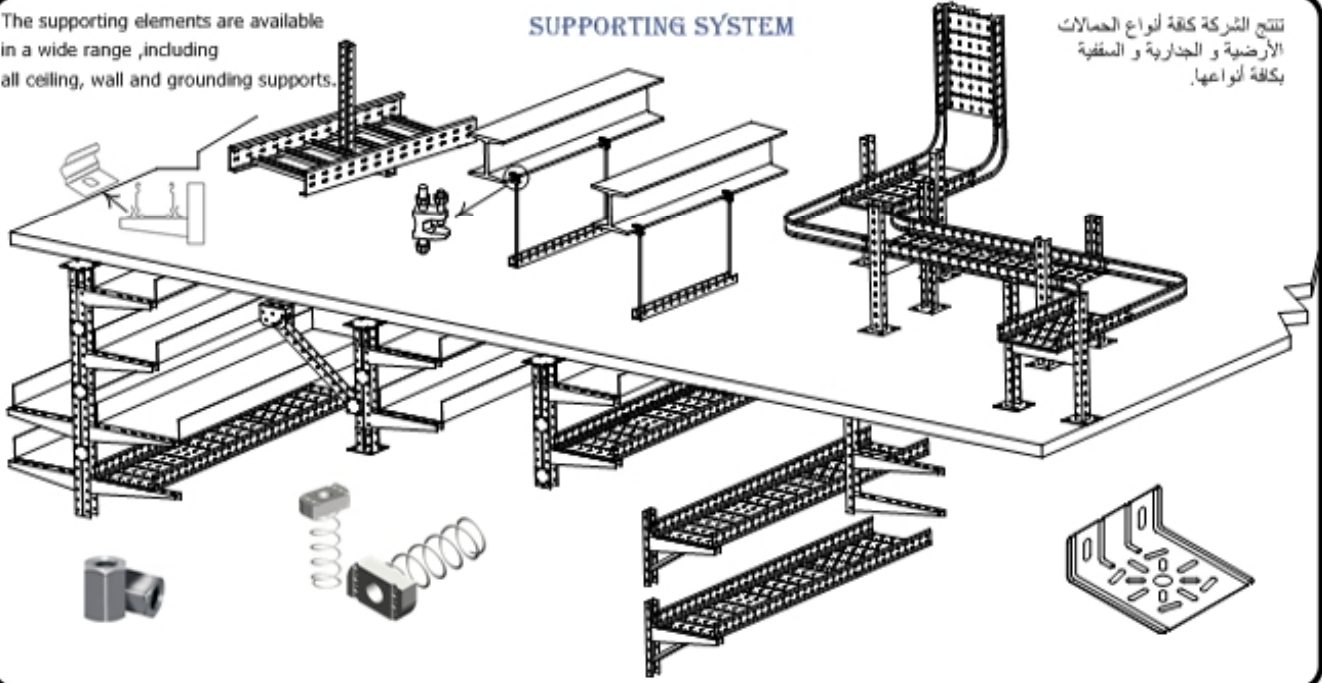


SUPPORT FOR STEEL BUILDING
WITH LIMIT ANGLE (TO)90
حمالة جسرية للهنكار مع تحديد الزاوية

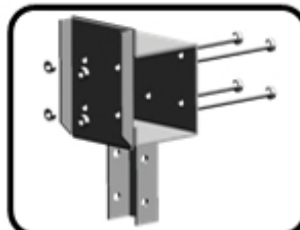
The supporting elements are available in a wide range ,including all ceiling, wall and grounding supports.

SUPPORTING SYSTEM

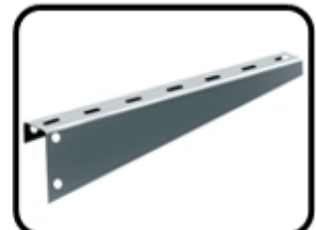
تتبع الشركة كافة أنواع الحوامل الأرضية و الجدارية و السقفية بكافة أنواعها.



L SHAPED WALL MOUNTING
SUPPORT
حمالة جدارية حرف ل



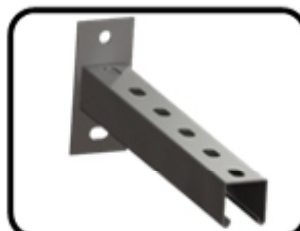
SUPPORT FOR EXTENSION
حمالة للمدادة



SUPPORT ON THE CANAL
حمالة على القناة



Bracket H Movable
حمالة أنش متحركة



SUPPORT ON THE CANAL
WITH LIMIT HEIGHT
حمالة على القناة مع تحديد الارتفاع



U CHANNEL & C CHANNEL
يو تشانل و سي تشانل

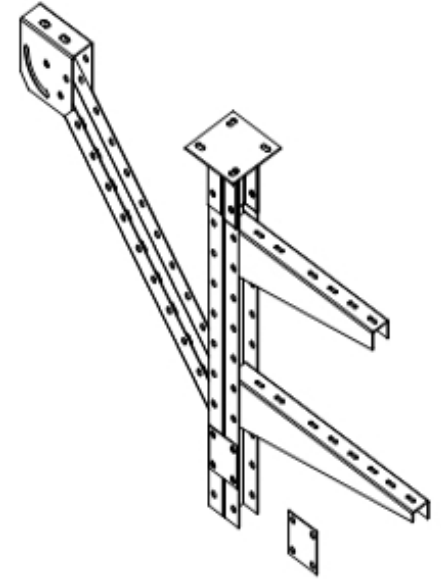
SUPPORT SYSTEM

FEATURES :

- A choice of materials
- Designed to support cable trays, trunkings and cable ladders.
- Has great flexibility.

PARTICULARS:

- a complete All-purpose use of perforated sections.



SIMPLE HANGING SYSTEM
(thickness 2.5 mm)

* Evaluate the Lu load per bracket

$$Lu = \text{cable weight per meter} \times \text{distance between supports}$$

(N) (N/m) (m)

* Evaluate the Momentum

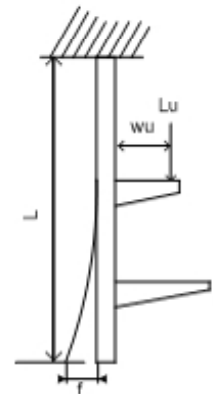
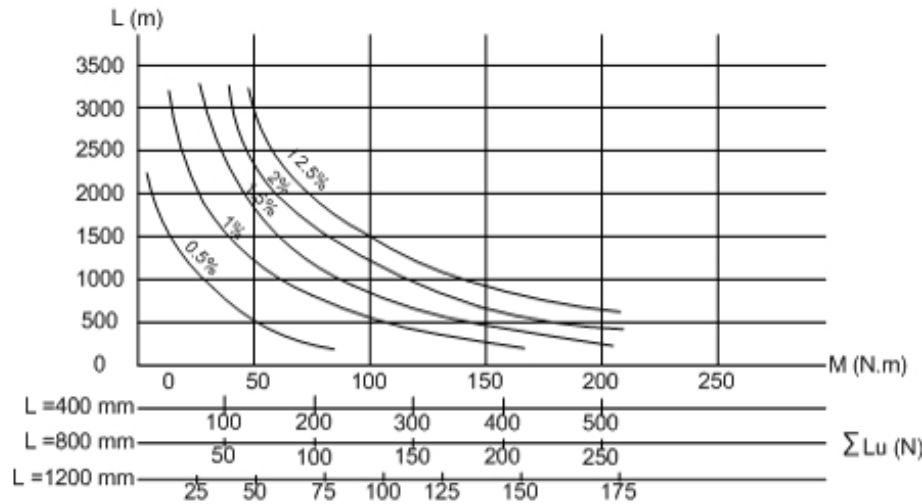
$$M = \sum_{i=1}^n wu \times Lu$$

(N.m) (m) (N)

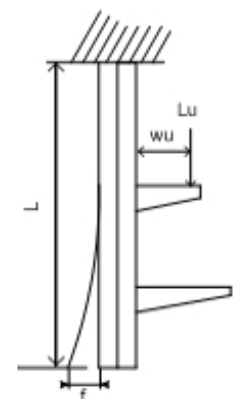
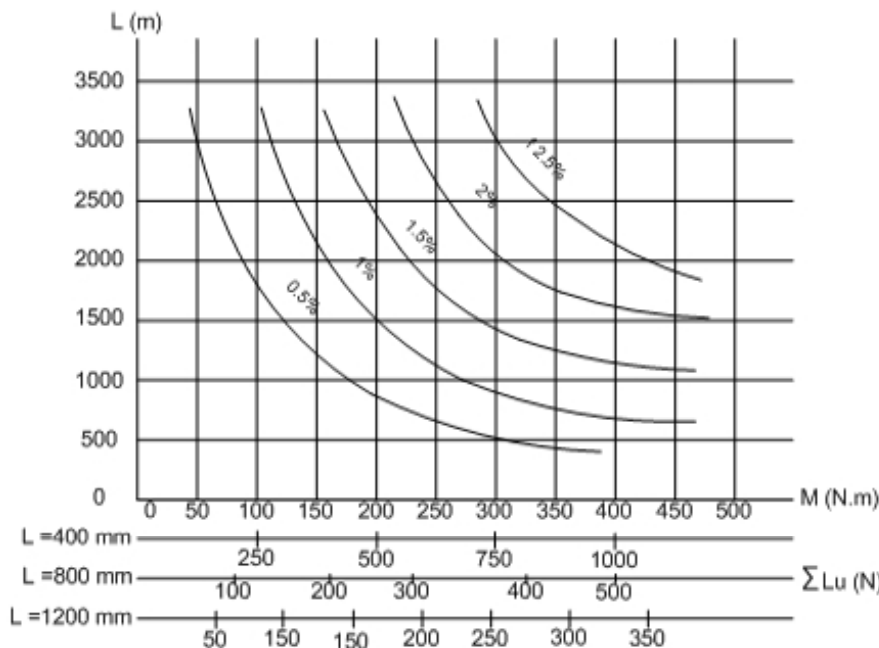
$wu = \frac{1}{2}$ width of cable trays + overlength

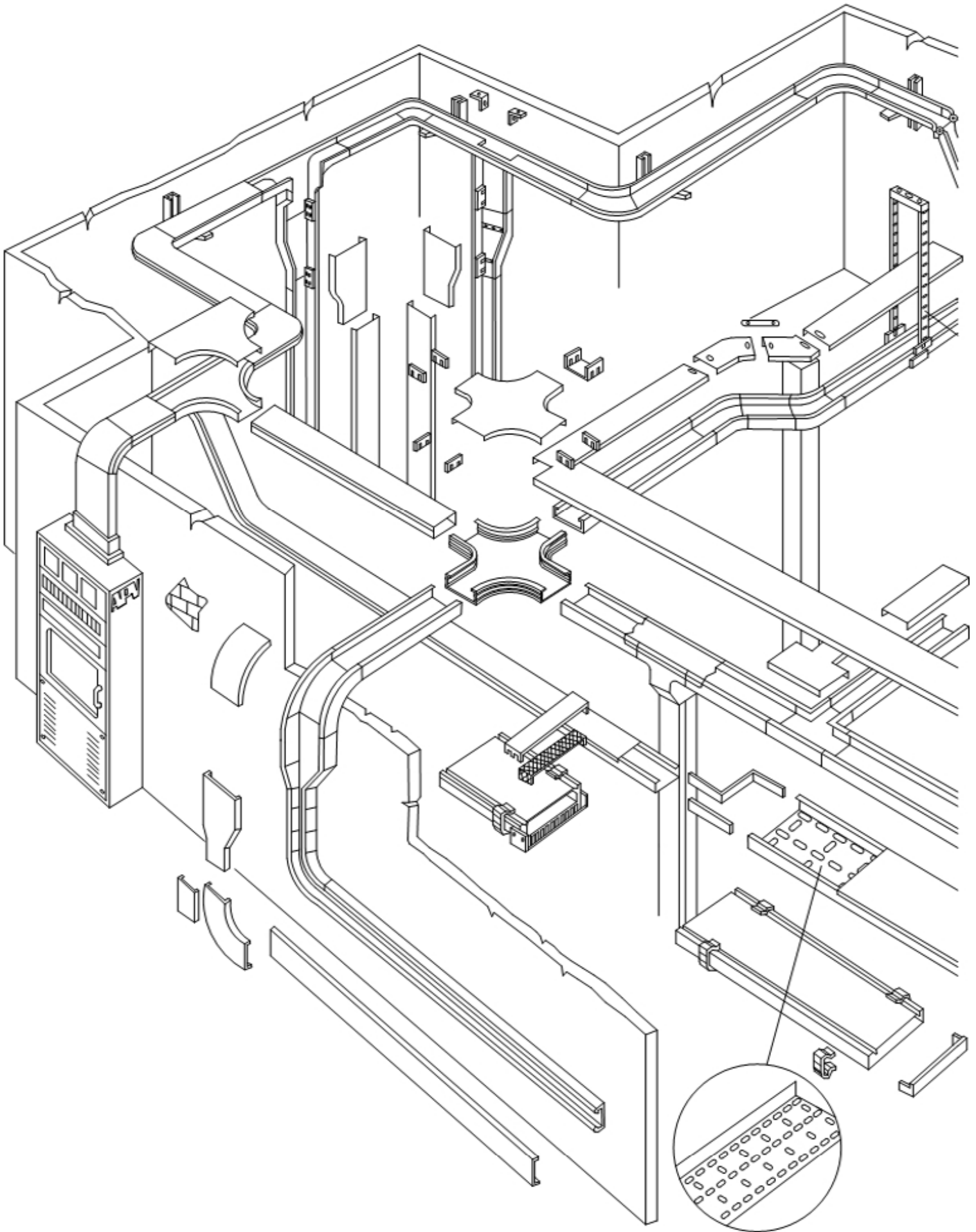
* See loading graphs for deflection f according to length L of the hanging system. In practice the limit will be 1.5% of length L to take into account the possible over loads.

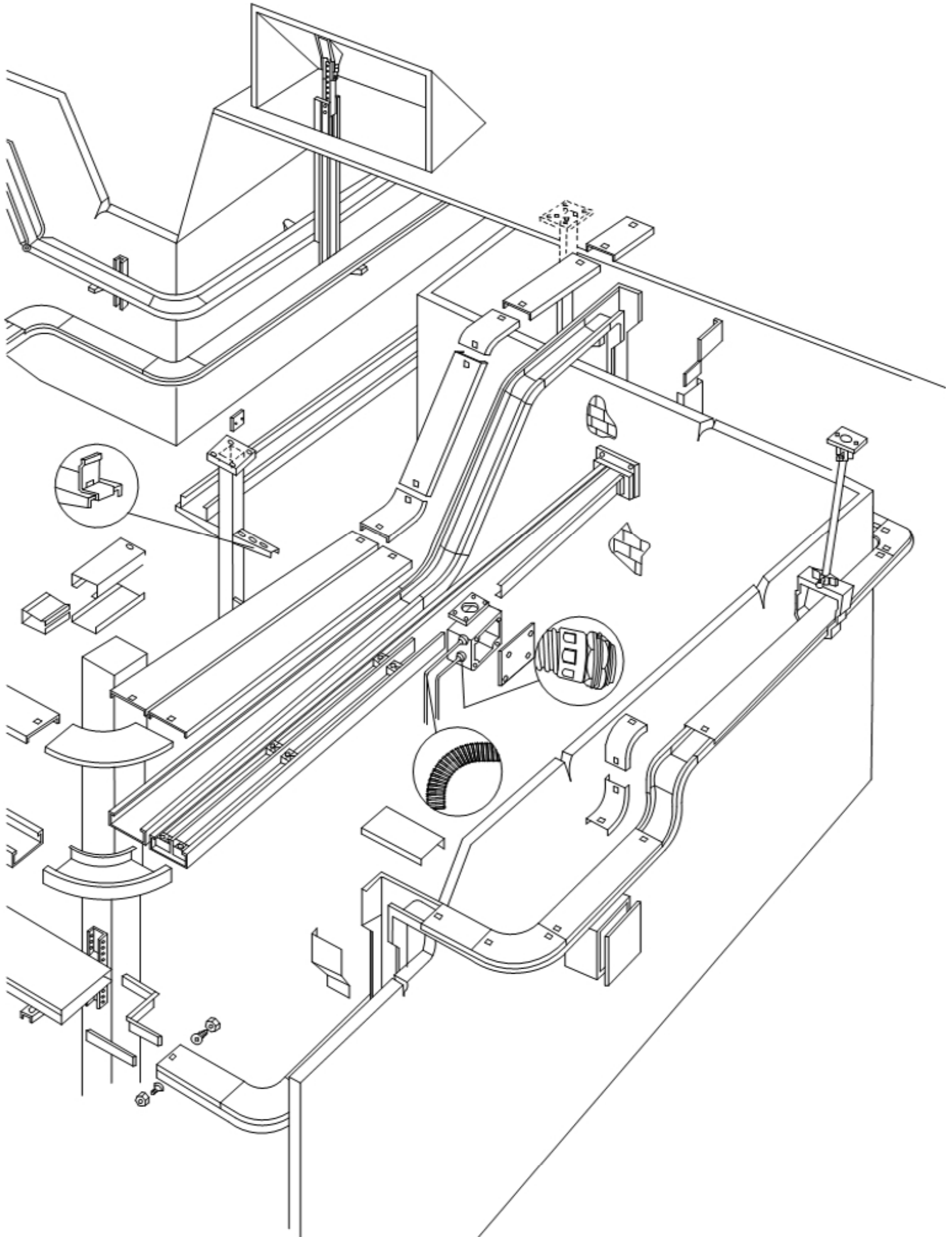
LOADING GRAPH

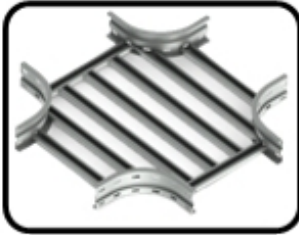


DOUBLE HANGING SYSTEM
(thickness 2.5 mm)









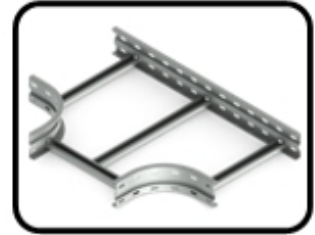
LADDER CROSSPIECE

مصالبة سلمية



90 BIG LADDER FLAT BEND

كوع مسطح سلمية كبير 90



LADDER EQUAL TEE

تي مسطح سلمية



LADDER LEFT REDUCER

نقاصة سلمية يسارية



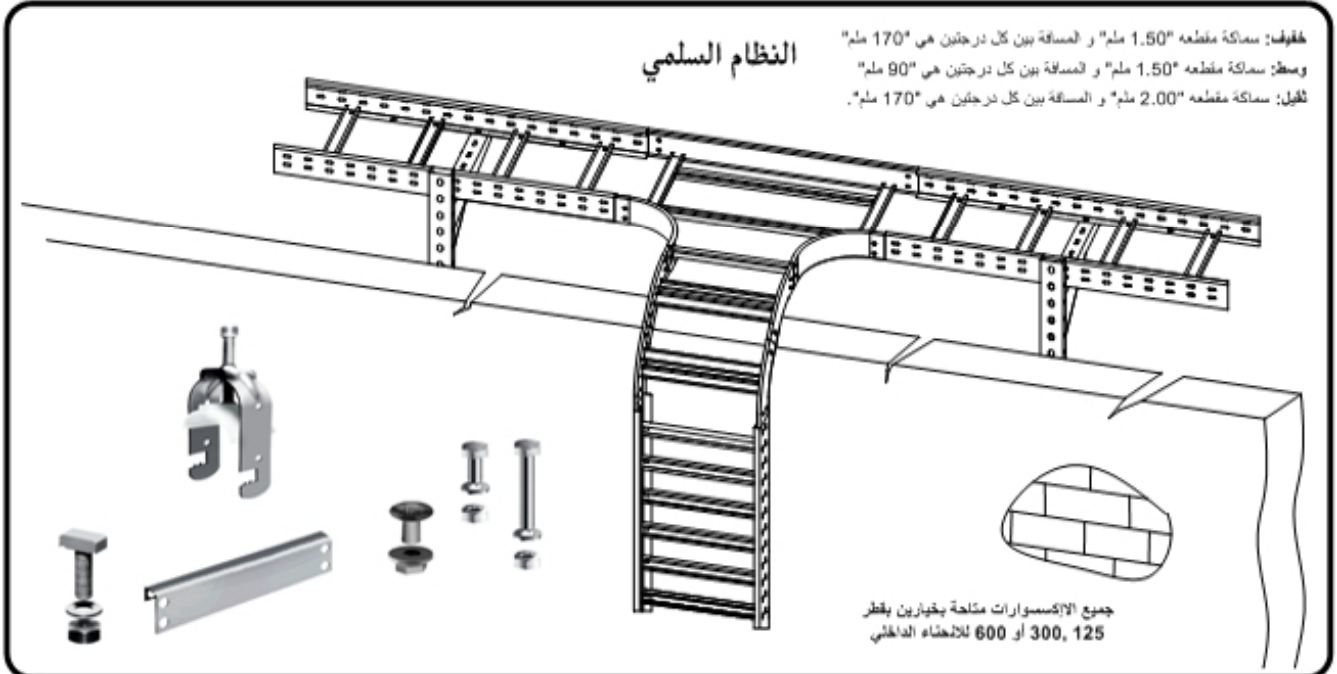
LADDER REDUCER

نقاصة سلمية



LADDER RIGHT REDUCER

نقاصة سلمية يمينية



النظام السلمية

مقاييس: سماكة مقطعه "1.50 ملم" و المسافة بين كل درجتين هي "170 ملم"
وسمك سماكة مقطعه "1.50 ملم" و المسافة بين كل درجتين هي "90 ملم"
ثقل: سماكة مقطعه "2.00 ملم" و المسافة بين كل درجتين هي "170 ملم".

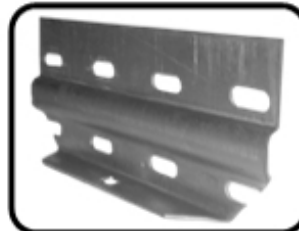
جميع الاكسسوارات متاحة بخيارين بقطر
300, 125 او 600 للانشاء الداخلي

متوفر بثلاثة ارتفاعات 050 و 075 و 100 ملم
وبعرض 150 و 200 و 300 و 400 و 500 و 600 و 700 و 800 و 900 و 1000 ملم لكل من الارتفاعات .



LADDER HEIGHT REDUCER

نقاصة ارتفاع سلمية



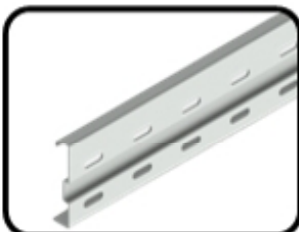
LADDER SIDE JOINT

وصلات سلمية



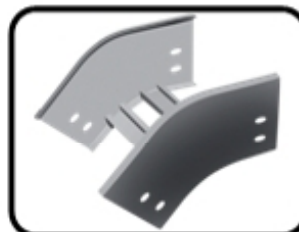
45 BIG LADDER FLAT BEND

كوع مسطح سلمية كبير 45



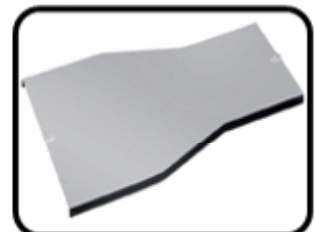
CABLE LADDER RIP

ضلع قناة سلمية



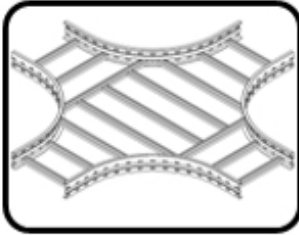
45 LADDER OUTSIDE RISER

كوع نزول سلمية 45

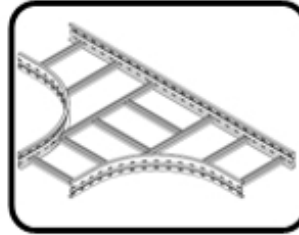


LADDER REDUCER COVER

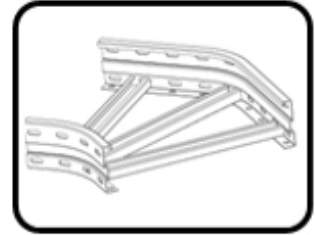
غطاء نقاصة سلمية



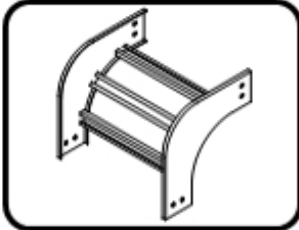
BIG LADDER CROSSPIECE
مصالبة سلمية كبيرة



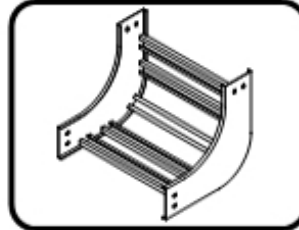
BIG LADDER EQUAL TEE
تي مسطحة سلمية كبيرة



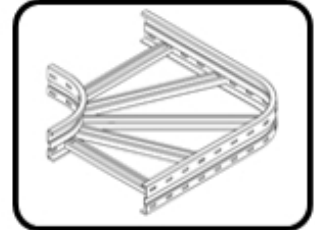
45 LADDER FLAT BEND
كوع مسطح سلمى 45



90 LADDER OUTSIDE RISER
كوع نزول سلمى 90



90 LADDER INSIDE RISER
كوع صعود سلمى 90



90 LADDER FLAT BEND
كوع مسطح سلمى 90

Light :this comes with "1.50 mm" thickness and" 170 mm" distance between each two rungs.

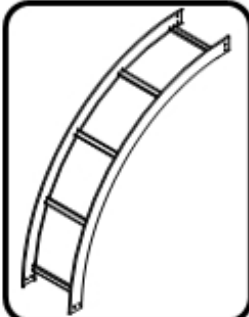
Medium :this comes with1.50" mm" thickness and 90 mm" distance between each two rungs.

Heavy :this comes with2.00 " mm" thickness and" 170 mm" distance between each two rungs.

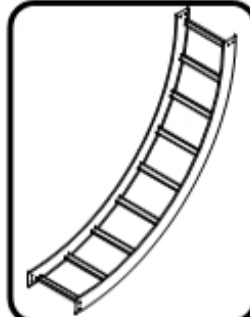
LADDER-TYPE SYSTEM

All of the fittings are available in two options; 125 ,300 and 600 radius.

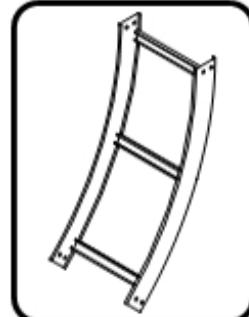
This system is available in three different heights ,050 075 and 100 mm with widths 150, 200, 300 ,400 ,500 ,600 ,700 ,800 ,900 ,1000 mm for each height.



90 BIG LADDER OUTSIDE RISER
كوع نزول سلمى كبير 90



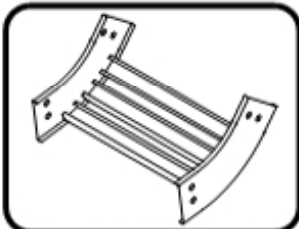
90 BIG LADDER INSIDE RISER
كوع صعود سلمى كبير 90



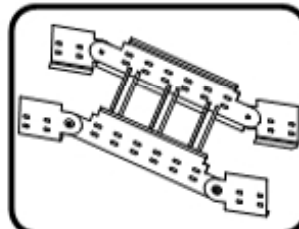
45 BIG LADDER INSIDE RISER
كوع صعود سلمى كبير 45



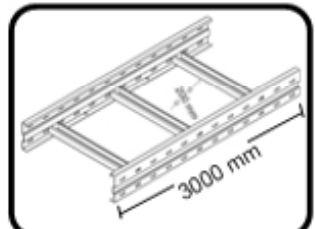
45 BIG LADDER OUTSIDE RISER
كوع نزول سلمى كبير 45



45 LADDER INSIDE RISER
كوع صعود سلمى 45



LADDER ADJUSTABLE RISER
كوع سلمى مفصلي



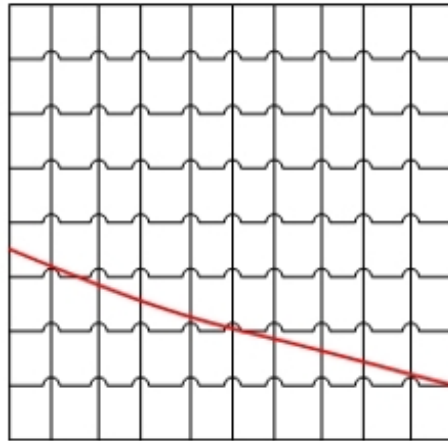
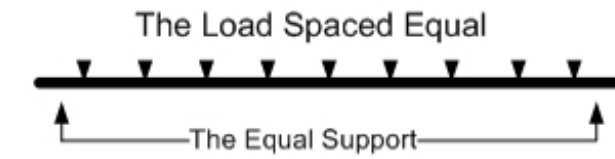
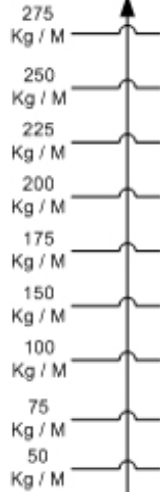
CABLE LADDER
قناة سلمية

LOADING GRAPHS

Strengthened CABLE LADDER

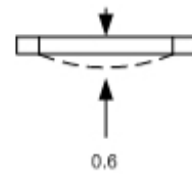


LOAD CAPACITY



Thickness

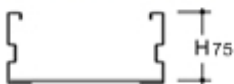
1.5 mm



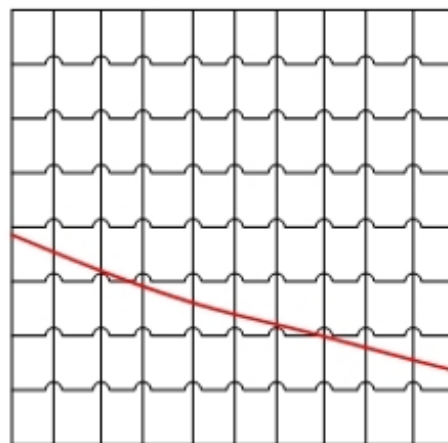
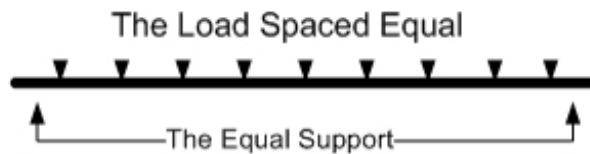
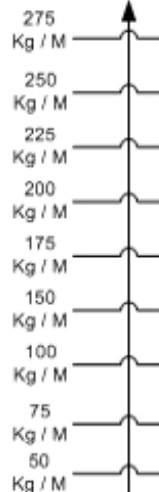
Safety Factor = 1.7

SUPPORT SPAN

Strengthened CABLE LADDER

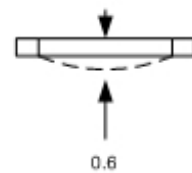


LOAD CAPACITY



Thickness

1.5 mm

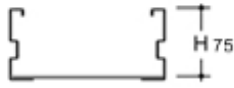


Safety Factor = 1.7

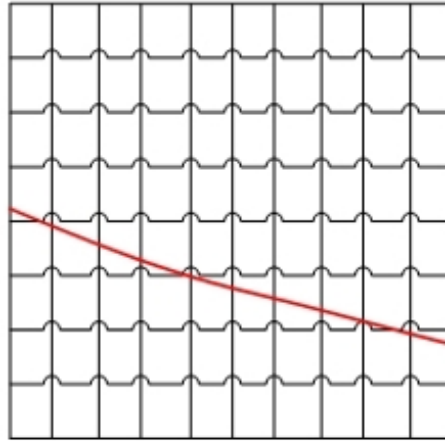
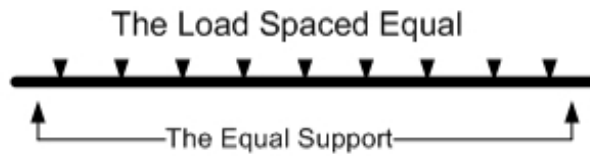
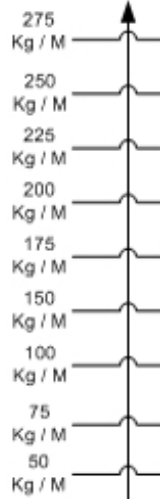
SUPPORT SPAN

LOADING GRAPHS

Strengthened CABLE LADDER

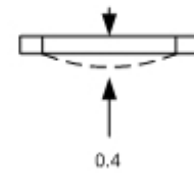


LOAD CAPACITY



Thickness

2 mm



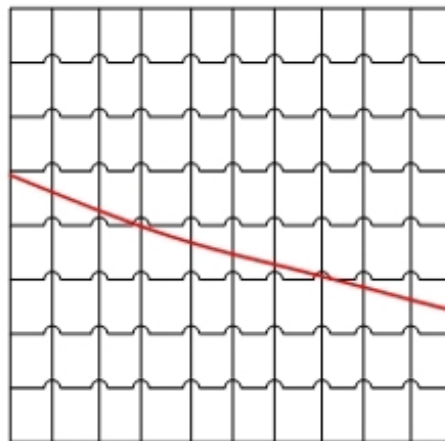
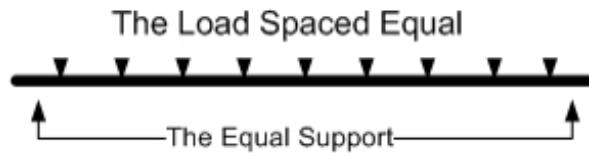
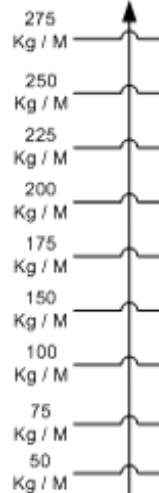
Safety Factor = 1.7

SUPPORT SPAN

Strengthened CABLE LADDER

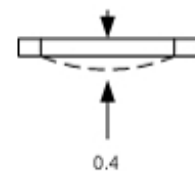


LOAD CAPACITY



Thickness

2 mm



Safety Factor = 1.7

SUPPORT SPAN



تصنيع كافة الخلايا واللوحات الكهربائية والصناعية ضمن القياسات والمواصفات العالمية.

Manufacturing cells and all electrical panels, industrial measurements and within the international standards.

لوحة صناعية
Industrial Panel

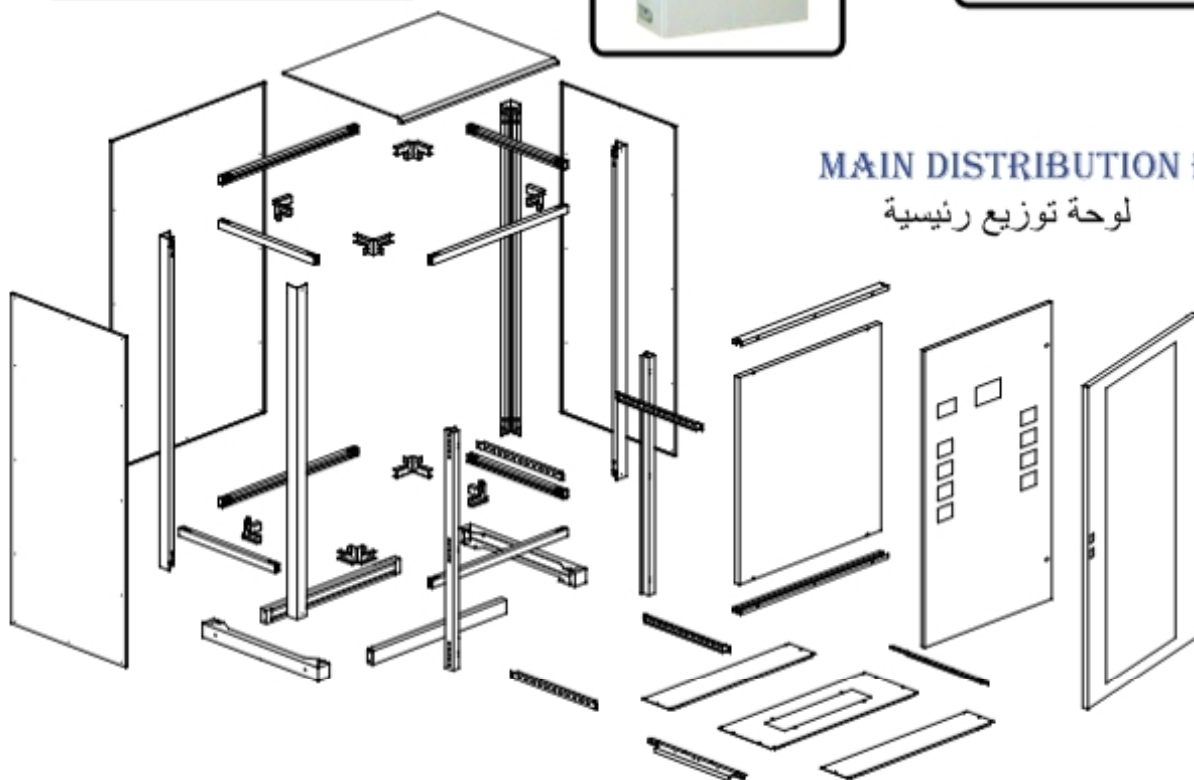


لوحة تجميع شبكة مركزية
Patch Panel



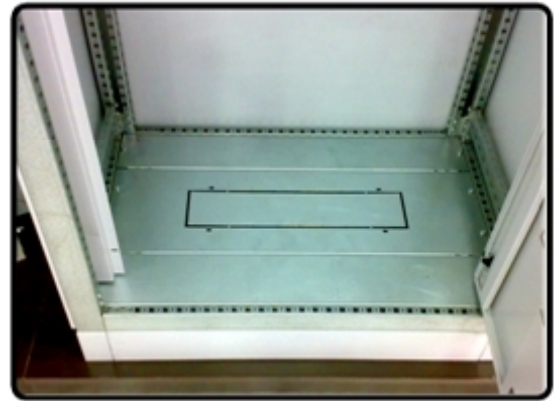
MAIN DISTRIBUTION BOX

لوحة توزيع رئيسية





باب داخلي
Inside Door



أرضية اللوحة
Floor Panel



لوحة تشغيل
OPERATION PANEL

جوان حراري (فوم)
Thermal Insulator. (Foam)



لوحة شبكة
PANEL CABINETS



الهيكل الداخلي
Internal structure.



CABLE GLAND (PG)
كابل جالاند (ب ج)

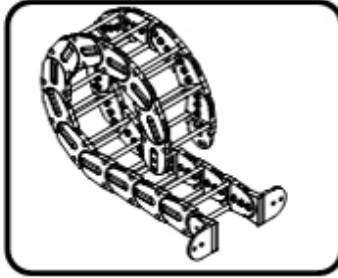


FLEXIBLE
فلكسبل

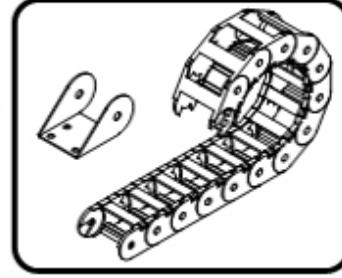


PRESS ATOP(GLAND)
برس توب (جالاند)

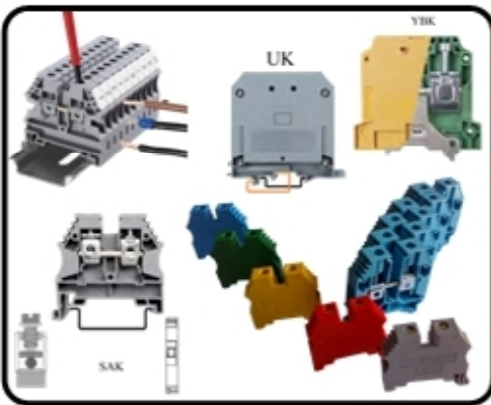
Flexible trays can be
Plastic or Plastic
with aluminum.



FLEXAILE TRAY
سير متحرك



سير متحرك موجود
باختيارين بلاستيك أو
بلاستيك مع عوارض
المنيوم بقياسات و
تفاصيل مختلفة



Universal Terminal Blocks
جنكسيونات (كليمن)



Wedges
أسفين



Filter For Electrical Panel
أنظمة تهوية اللوحات



Cable luge
الصوليات

مخارج معزولة

CAOUTCHOUC
حزمة كابلات
كوشوك



Under-floor Boxes:

Under-floor boxes produced by A.P.V major types:

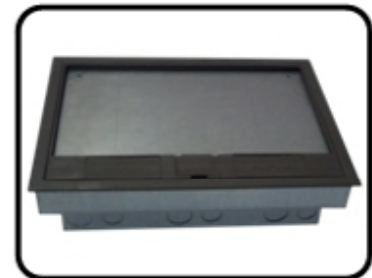
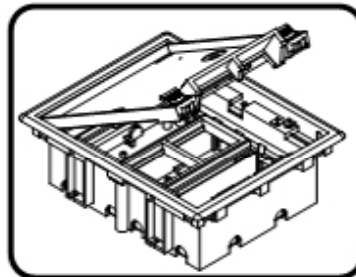
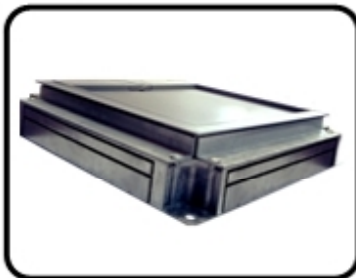
- 1- Service Outlet.
- 2- Junctions Boxes

UNDER FLOOR BOX
علبة كهربائية أرضية



Pipe Clamps
مربط أنبوب

العلب الأرضية
تنتج الشركة العلب الأرضية بكافة أبعادها و هم:
1- منفذ الخدمة.
2- علبة التقاطعات.





صور لبعض المشاريع المنفذة من قبل شركة (APV)
Pictures of projects implemented by the Company (APV).



وتم تنفيذها ضمن القياسات والمواصفات العالمية
Have been implemented within the measurements and specifications.



NEMA VE 2-2000
Page 19

NEMA VE 1-2009/CSA C22.2 No. 126.1-09
Page 15

Example Value = -20°F (-33°C)

- Draw a line between the maximum and minimum points.
- Plot the temperature at the time of installation to determine the gap setting.
Example Value = 38 in. (9.5 mm), 50°F (10°C).

Special hardware is supplied with expansion splice plates. The nuts may have a slipping device (plastic stop nut). Important—for plastic stop nut designs, tighten hardware, and then loosen 1/2 turn. For other types of hardware, follow manufacturer's instructions.

Metal Cable Tray expansion joints require bonding for electrical continuity. Refer to Section 4.7 for bonding jumper installation (see Figure 4.12).

Supports should be located within 2 ft. (600 mm) of each side of expansion splice plates.

Figure 4.12B
GAP SETTING OF EXPANSION SPLICE PLATE
1 in. (25.4 mm) Gap Maximum*

*For designs using 3/8 in. (9.5 mm) maximum gap (typically non-metallic), multiply gap setting by 0.625.

4.3.3 Vertical Adjustable Splice Plates (See Figures 4.14A and 4.14B.)

For changes in vertical direction not requiring a radius, vertical adjustable splice plates can be used. Supports should be located within 2 ft. (600 mm) of each side of vertical adjustable splice plates.

- Position splice halves so that offsets adjust for material thickness and fasten with nut and bolt using hole (A).

Figure 1
ILLUSTRATION OF SELECTED DEFINITIONS
(See Clause 2.1)

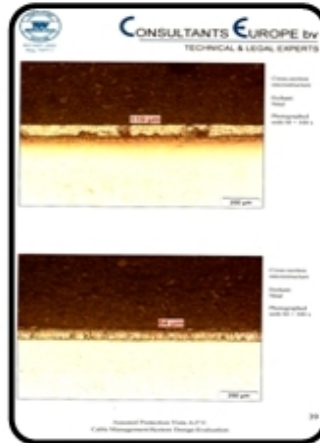
Legend:

- 1 = Ladder cable tray
- 2 = Ventilated cable tray
- 3 = Solid-bottom cable tray
- 4 = Rigid connector
- 5 = Horizontal elbow
- 6 = Horizontal tee
- 7 = Horizontal cross
- 8 = Vertical elbow
- 9 = Vertical tee
- 10 = Reducer
- 11 = Channel cable tray
- 12 = Divider
- 13 = Cover
- 14 = Tray-to-box connector
- 15 = Channel vertical elbow
- 16 = Blind end
- 17 = Dropout

CONSULTANTS EUROPE
نموذج اختبار



CONSULTANTS EUROPE
Zinc Layer Thickness
طبقات سماكة الزنك



CONSULTANTS EUROPE
Zinc Layer Thickness
طبقات سماكة الزنك



CONSULTANTS EUROPE
Zinc Layer Thickness
طبقات سماكة الزنك



Illustration for Rolling mill process .



Illustration for metallic solidity tolerance.



CELTC
Galvanization Test (2009/04/08)
مركز الفحوصات الهندسية والمخبرية والمعايرة
اختبار الخلفنة (2009/04/08)



CELTC
Galvanization Test (2009/04/07)
مركز الفحوصات الهندسية والمخبرية والمعايرة
اختبار الخلفنة (2009/04/07)



CELTC
Load Test on Metal Cable Tray (2009/04/07)
مركز الفحوصات الهندسية والمخبرية والمعايرة
اختبار تحميل سراج كابل نري (2009/04/07)



ELTEL
Middle East (2010/02/04)
إل تيل
اختبار الشرق الأوسط (2010/02/04)



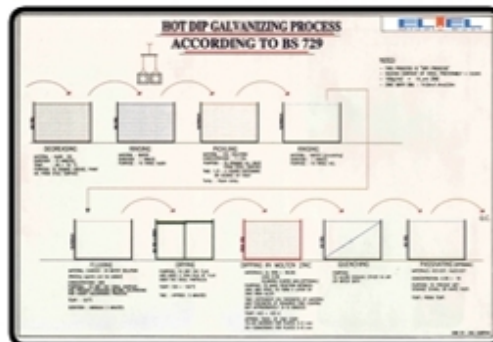
ELTEL Middle East
Galvanizers Association
(GA 2005)



CELTC
Load Test on Metal Cable Tray (2009/04/06)
مركز الفحوصات الهندسية والمخبرية والمعايرة
اختبار تحميل سراج كابل نري (2009/04/06)



ELTEL
Middle East (2010/06/30)
إل تيل
اختبار الشرق الأوسط (2010/06/30)



ELTEL
HOT DIP GALVANIZING PROCESS
ACCORDING TO (BS 729)



ELTEL Middle East
Galvanizers Association (GA 2009)



ELTEL
Middle East (2009/05/18)
إل تيل
اختبار الشرق الأوسط (2009/05/18)

APV GROUP

Jordan,

Jubilee advanced system, inc
Amman,
 Phone: +962 65516682
 Fax: +962 65510663
 Mob: +962 795656771
 E-Mail: jordan-jas@apv-group.net

Lebanon,

Hard Electric,
Beirut
 Bir Hassan Facing Golf Club of Lebanon,
 Phone 1: +961 1 8552773
 Phone 2: +961 1 841844
 Fax 1: +961 1 855274
 Fax 2: +961 1 821826
 E-Mail: harb@apv-group.net

Egypt,

Power Market
Cairo,
 Entrance 5B bank Misr buildings,
 Khatam Al-morsalin street
 Alatrham – Giza, Egypt.
 Tel. & Fax: +20 2 35474771
 Mob: +20 2 103497779
 E-Mail: egypt@apv-group.net

Libya,

Al Sanad for Electronic Equipment
Tarabulus,
 Phone: +218 21 7122532
 Fax: +218 21 3408300
 Mob: +218 927208090
 E-Mail: al-sanad@apv-group.net

Iraq,

Amta Company
 Phone: +964 7708313675
 Mob: +964 7703023890
 E-Mail: info@apv-group.net

Kuwait,

Premkum Building Materials, Al Salmiyeh,
Salim
 Mobarak St.Bo Khameen Mall, Block 20,
 Building 36, floor 2.
 Phone: +965 25751680
 Fax: +965 25751738
 Mob: +965 66111425
 E-Mail: pbn-ku@apv-group.net

Qatar,

WhiteWam, Doha,
 Phone: +974 4688466
 Fax: +974 4604239
 Mob: +974 5516205
 E-Mail: whitwam@apv-group.net

UAE

Premium Bulking Materials
Dubai,
 Travel and market Bid, 1st floor.
 Phone: +971 42 660743
 Fax: +971 42 660744
 Mob: +971 506257654
 E-Mail: pbn-ae@apv-group.net

Aleppo,

Dawar Al Shakf (Beadeen),
 Phone: +963 21 4129665
 Fax: +963 21 4129178
 Mob: +963 932481000
 E-Mail: projects@apv-group.net

Homs,

Jover Al Shaeen,
 Phone: +963 31 2211489
 Fax: +963 31 2478406
 Mob: +963 944223025
 E-Mail: Homes@apv-group.net

Daraa,

Al Naser Co.
 Daraa Moujamaa AlNoor, floor 1,
 Phone: +963 15 212108
 Fax: +963 15 212108
 Mob: +963 945505040
 E-Mail: daraa@apv-group.net

Morocco,

Van Elec.
 Phone : +212 52227
 Fax: +212 52227
 Mob: +212 66 1201567
 E-Mail: didi.funec@gmail.net

Traq,

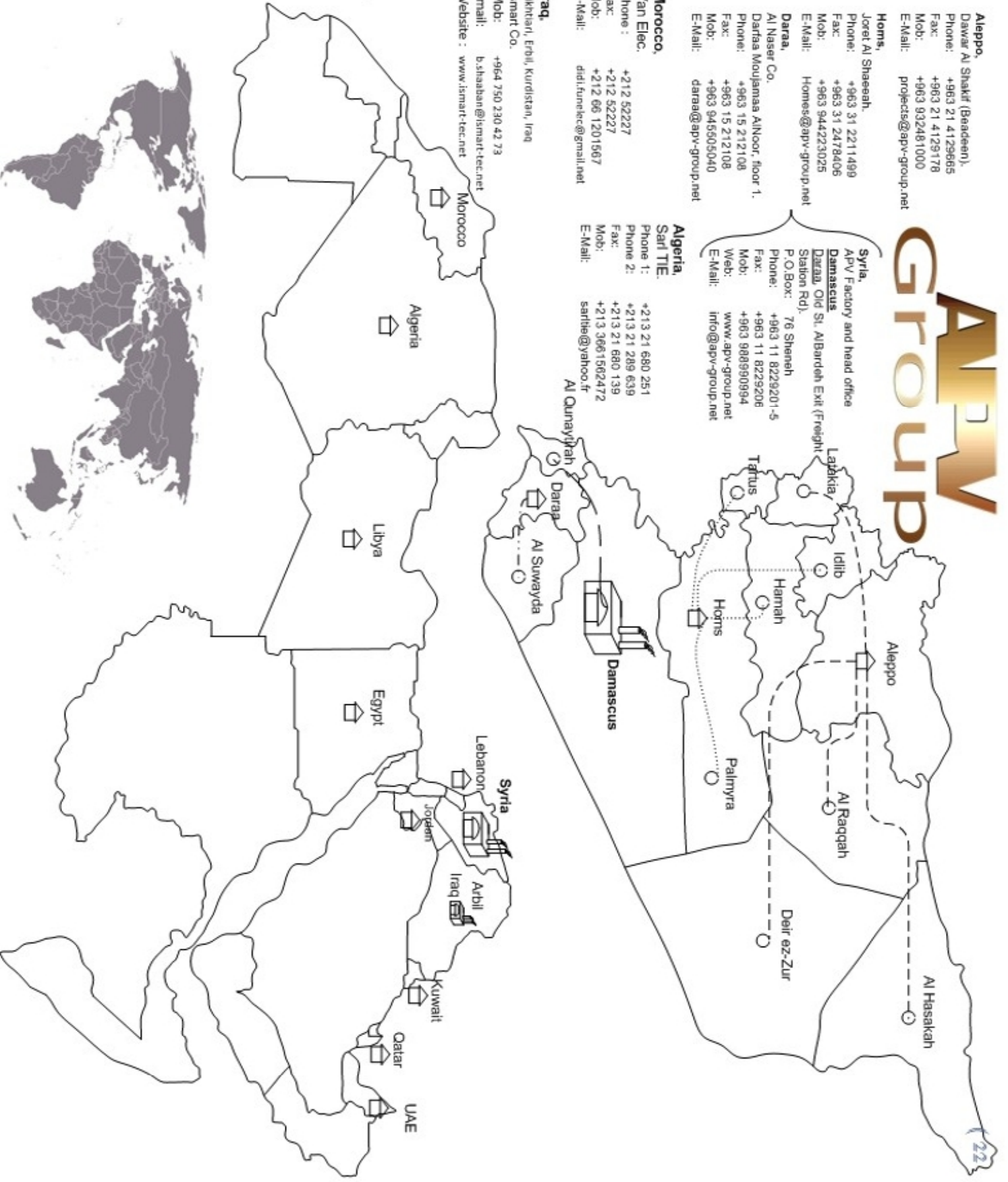
Bikhtari, Erbil, Kurdistan, Iraq
 Ismart Co.
 Mob: +964 750 230 42 73
 Email: b.shaaban@ismart-ec.net
 Website : www.ismart-ec.net

Algeria,

Sarl TTE.
 Phone 1: +213 21 680 251
 Phone 2: +213 21 289 639
 Fax: +213 21 680 139
 Mob: +213 3661562472
 E-Mail: sartte@yahoo.fr

Syria,

APV Factory and head office
Damascus
 Daraa, Old St. AlBardah Exit (Freight Station Rd).
 P.O.Box: 76 Sheneh
 Phone: +963 11 8229201-5
 Fax: +963 11 8229206
 Mob: +963 988990994
 Web: www.apv-group.net
 E-Mail: info@apv-group.net





APV for Cables Management Systems has been established since 1998.



Factory has been launched and qualified by hands of a full team experts at heart of Middle East.



Panels and Electrical Cells Factory has been founded in 2009 with most modern (CNC) Programmed machines.

Plastic Factory has been founded in 2008 with most recent equipments.



Our warehouse are well equipped and suitable for all kinds of goods .

In the year 2000, equipped latest machines were programmed in our factory, by a well-trained team.

APV Group

شركة محمد مأمون ومحمد مازن الملط التضامنية

WWW.APV-GROUP.NET



Assured Protection Vista APV Group
Syria, Damascus, Daraa Old Road, AlBardeh Exit.
P.O.Box: Sbeneh 76.

Mob : +963 (0) 98 89909 94 Mob2 : +963 (0) 98 89909 94
Tel : +963 (0) 11 822 92 01-5 Fax : +963 (0) 11 822 92 06
Web : www.apv-group.net
E-mail : info@apv-group.net E-mail2 : apv.mazen@yahoo.com

